

July 08, 2016

Gilbane Construction Update

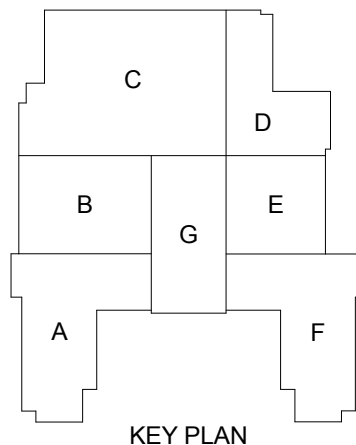
Activities in progress as of July 08, 2016:

- ▶ Exterior sheathing Area F west elevation in progress
- ▶ Area F south stairs installation in progress
- ▶ Interior metal stud framing Areas A, F & G Cedar Level in progress
- ▶ Interior metal stud layout Areas F & B Cedar Level in progress
- ▶ Area G Cedar Level Corridor G102.1 slab-on-grade poured
- ▶ Scaffold erection for Auditorium demo started
- ▶ Spray-on-fireproofing on Cedar Level in progress
- ▶ Area B Washington Level Competition Gym underground electrical started
- ▶ Areas B & C Cedar Level hollow core plank setting in progress
- ▶ Masonry in Areas B & D Cedar Level in progress
- ▶ HVAC duct & piping in Areas A, F & G 2nd floor in progress
- ▶ Hollow metal door frames installation in Areas A & F 2nd floor in progress
- ▶ Electrical in-wall rough-in Areas A, F & F 2nd floor in progress
- ▶ Interior bathroom masonry in Area A 2nd floor in progress
- ▶ In-wall blocking in Areas A & F 2nd floor in progress
- ▶ Duct & pipe insulation on 3rd floor in progress
- ▶ Sprinkler piping on 3rd floor in progress
- ▶ Demo for courtyard window replacement started on 3rd floor
- ▶ Demo of existing roof & install of new temporary roof on Area F in progress
- ▶ Spray foam insulation on Area A west elevation in progress
- ▶ Prep for slab-on-grade in Area C

Upcoming Project Milestones:

- ▶ Brick veneer installation Area A west elevation start week of 7/11

Construction Key Plan:





Underground Electrical in Competition Gym



Area B Washington Level



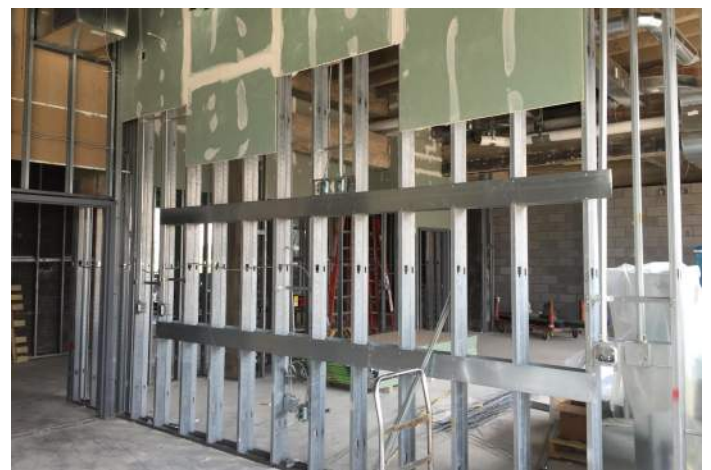
Area A Spray Foam Insulation West Elevation



Area F Exterior Sheathing West Elevation



Area D Loading Dock Ramp Excavation



Area G Stud Framing, In-Wall Blocking & Electrical In-Wall Rough-In

